

**THE**  
**IMIE**

**CAPABILITY REQUIREMENTS**

***'FROM THE ELEVATOR  
TO THE SHOP FLOOR'***

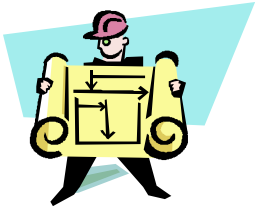
# WHY USE A CAPABILITIES BASED APPROACH?

- CAPABILITIES PROVIDE A **COMMON LEXICON** TO BIN REQUIREMENTS AND DESCRIBE RESOURCES (PEOPLE – PROCESSES – "AUTOMATION" - DOLLARS)
- CAPABILITY RESOURCES ARE MEASURABLE AND CAN CHANGE OVER TIME
- AS NEW CAPABILITIES ARE IDENTIFIED THEY CAN BE EVALUATED & ADDED
- AS **CAPABILITIES OR RESOURCES EVOLVE** THEY CAN BE CHANGED
- AS OLD CAPABILITIES EXPIRE THEY CAN BE RETIRED
- RESOURCES CAN BE REUSED AND RESOURCE LEVELS CAN BE MONITORED
- CAPABILITIES SHOW WHAT THE IMIE NEEDS TO DO AND HOW IT WILL DO IT
  - TO IDENTIFY CAPABILITY REQUIREMENTS AND GAPS
  - TO ASSIST WITH PRIORITIZATION OF IMIE RESOURCES
  - TO REVEAL COMMON AND UNIQUE TECHNICAL FUNCTIONS & PROCESSES TO MEET INFORMATION REQUIREMENTS
- ACCOMMODATES STAGGERED MATURITY OF REQUIREMENTS ACROSS THE BTA
- ALLOWS FOR BTA-WIDE IMPLEMENTATIONS OF SOLUTIONS AND A CLEAR PATH TO ENTERPRISE AVAILABILITY, USE, AND INTEROPERABILITY

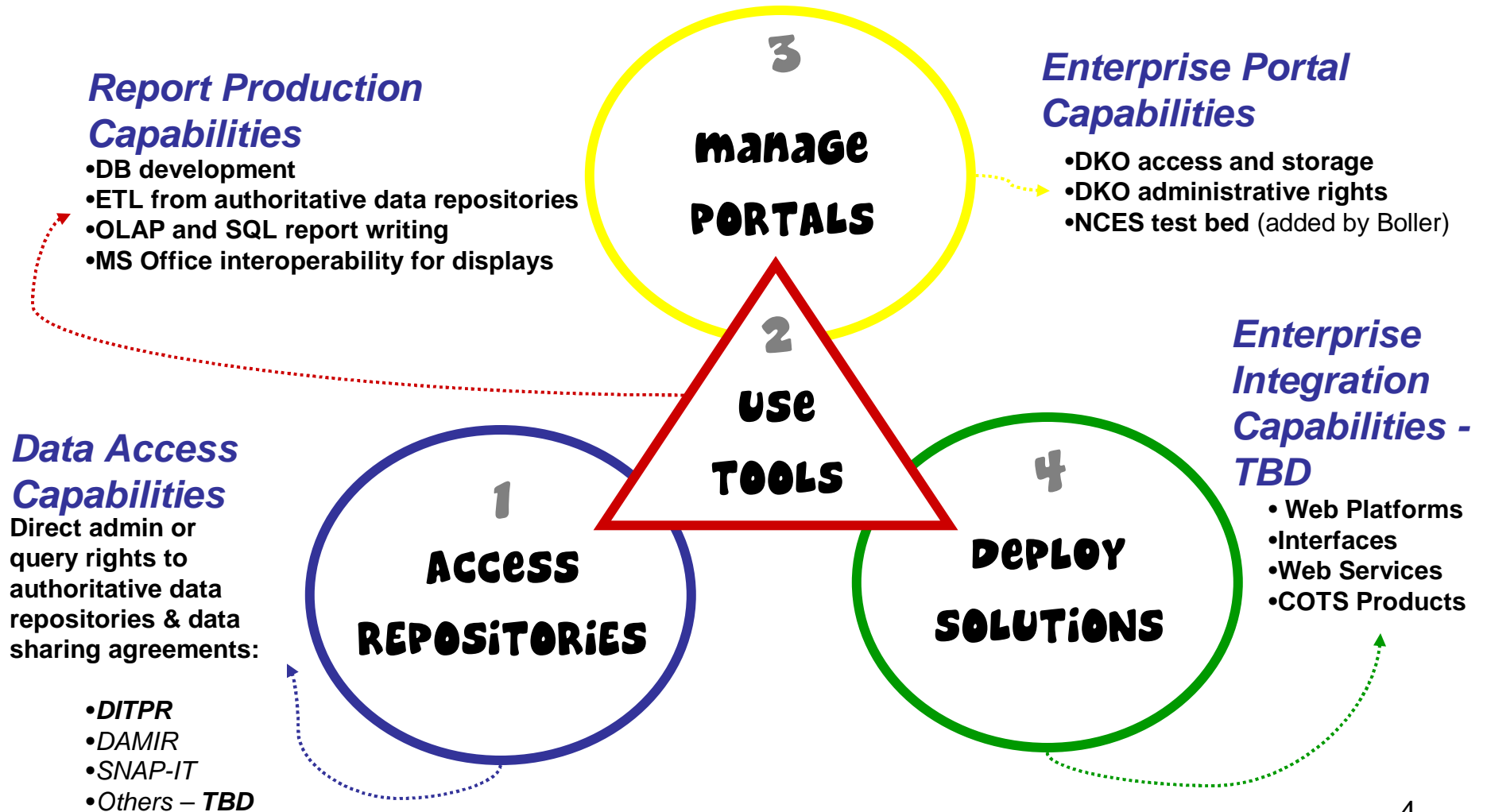
**AUTOMATION:** REPOSITORIES, TOOLS, PORTALS, SOLUTIONS

# IMiE CAPABILITY REQUIREMENTS SUMMARY

- **DATA ACCESS AND DATA SHARING CAPABILITIES (TECHNICAL ACCESS UNDER APPROVED DATA SHARING AGREEMENTS) TO SUPPORT SOLUTION DESIGN USING IDENTIFIED REQUIREMENTS**
- **REPORT PRODUCTION CAPABILITIES FOR SOLUTION DEVELOPMENT, TESTING & EVALUATION**
- **ENTERPRISE PORTAL CAPABILITY FOR INFORMATION SHARING AND USER PARTICIPATION**
- **ENTERPRISE INTEGRATION CAPABILITIES FOR DEPLOYMENT & SCALABILITY OF APPROVED SOLUTIONS**



# IMIE CAPABILITIES BLUEPRINT



# iMiE CAPABILITIES ROADMAP

**Awaiting Approval for Capabilities & Staffing**

**Time CUMULATIVE**

